

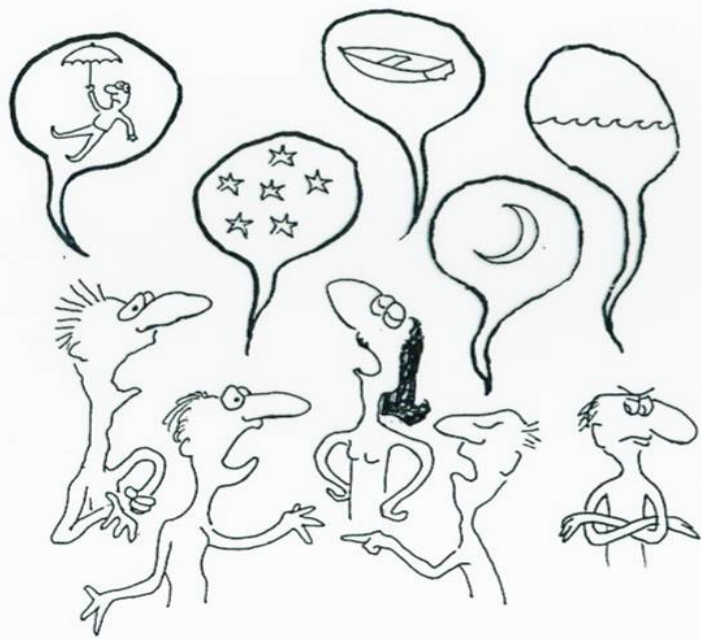
Partnerships to Advance Workforce Education

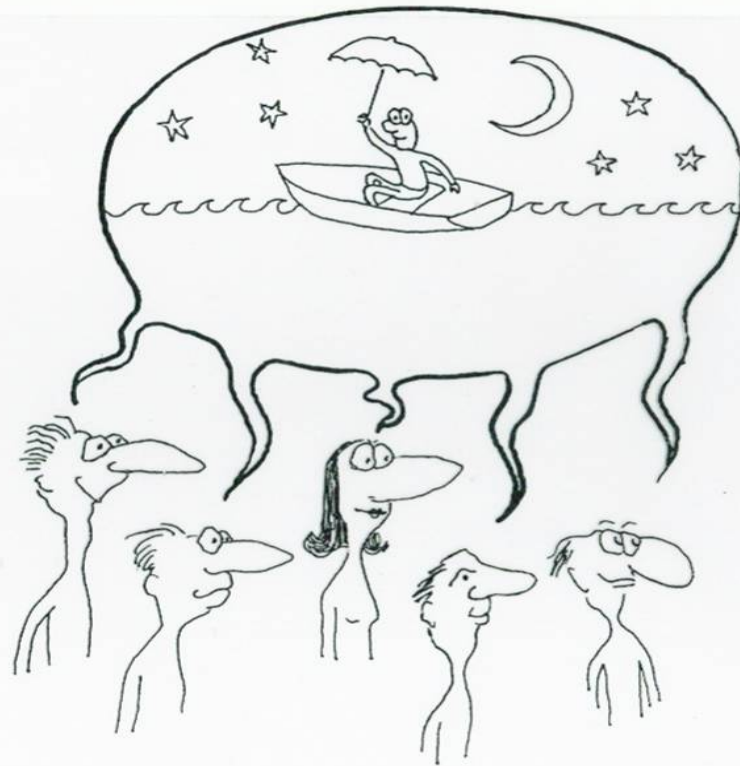
Building Healthy Labour Markets in
Newfoundland and Labrador

Oct. 31, 2006

St. John's







Community Education Network (1991)

“A Partnership of Agencies”



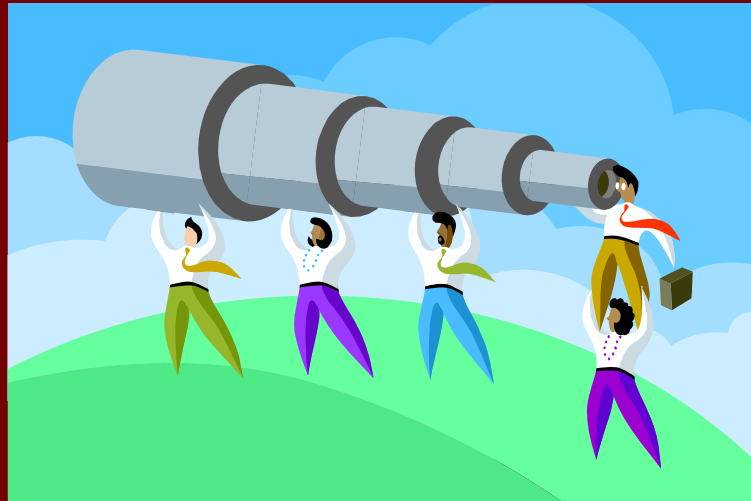
Mission

- Guided by community education principles, the mission of the Community Education Network is to create a learning culture through a lifelong learning process which promotes personal enrichment and healthy, sustainable communities.



Community Education Network (2006)

- “A collaborative—an entity where people work together collaboratively, through inspired action and learning, to create and realize bold visions for their common future.”



Collaborative Structure & Process

- Community Fora & Roundtables
- Networking Group
- 4 incorporated organizations (CEN, CAC, CIS, CYN)
- Leadership Group
- Programs & Projects



Six Strategic Directions

- Prevention and Early Intervention
- Youth Initiatives
- Career Development & Employment
- Community Literacy
- Community Leadership
- Participatory Communications

“How many jobs have
you created?”

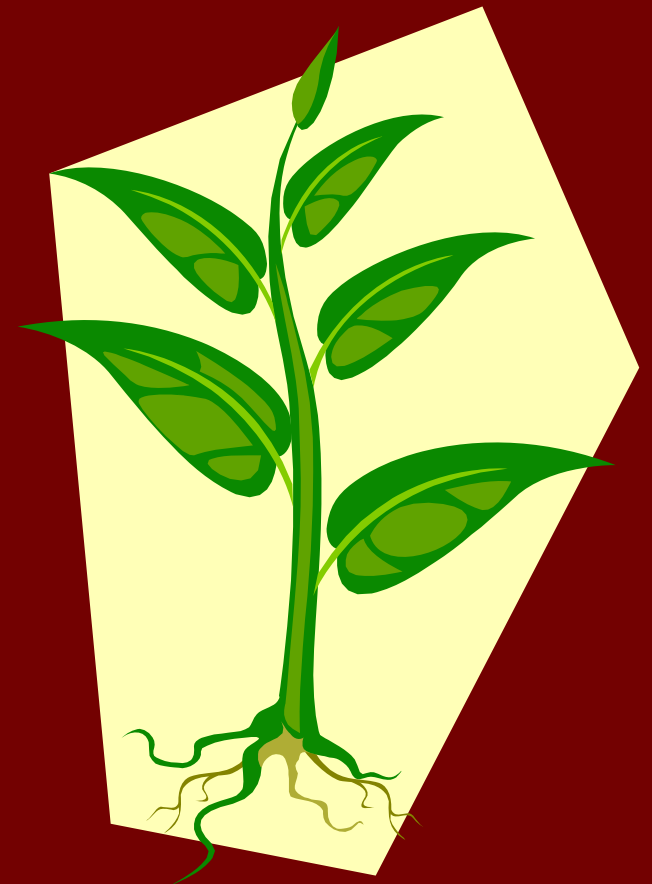
**“How has CEN advanced
workforce education?”**

Brokering/Sponsoring Existing Programs

- Linkages
- SWASP
- Skills Link
- Career Focus
- Bridging the Gap
- Job Creation Partnership
- Employment Assistance Services
- Summer Career Placement
- Youth Internship
- Graduate Employment
- FRAM

Developing New Programs

- Planting the Seeds for Learning
- Experiencing Work
- LifeWorks
- LiteracyWorks
- CEE/IS-CEE
- Job Shadowing
- Lifelong Connections
- Experiencing the Trades



Advancing Workforce Education through partnerships with:

- Colleges/Universities/Schools
- Multiple Agencies
- Transition programs
- Local businesses

By Providing:

- On the job training
- Skills development
- Mentoring



Supporting Volunteers

- People Helping People (a partnership amongst parents, staff and agencies)
- F&ST – Families & Schools Together
- CIS volunteers
- Youth volunteers



On the One Hand...

- Bridge to what?
Training for what?
- Short term funding
- Retaining core staff

On the Other Hand...

- People tend to move on to other opportunities
- Better than nothing
- Our retention is high



“Providing a supportive environment is the cornerstone which leads to participation/involvement and capacity building. It is a natural progression.”